

COURSE GUIDE

TERM 4



*Right where
you need us!*

Drought **HELP**

**Get help to apply for
emergency drought relief**

FREE* Leisure Classes for eligible
drought-affected farmers and
businesses

**Find out if you qualify on page 8*

Community College

NORTHERN INLAND INC.

BARRABA
BINGARA
GUNNDAH
INVERELL

MOREE
NARRABRI
WARIALDA



REGISTERED TRAINING ORGANISATION 90027

Welcome

A MESSAGE FROM OUR EXECUTIVE OFFICER

This Term the college, staff and trainers are using their assets to reach out to farmers and businesses in this drought. You will see on page 8 and 9 that we are offering free one to one sessions for farmers to assist accessing the Drought Hub and to prepare documentation.

We are also offering forty free hobby courses to farmers or business owners in the area. This is a great opportunity to try a class and many of our wonderful tutors are donating their time, other costs are covered by the college. These classes are also available for the general public and paying a fee helps us towards costs.

We are offering a lot of introductory courses this term to prepare you for study in 2019. You can try some units from information technology (computers), business, community services, disabilities or aged care or even look at options in hospitality. We also have our Foundation Skills, Kickstart and Next Steps programs for people starting out on their learning journey.

Please let people know about the drought courses and encourage anyone that you know could benefit to come along. Thanks Again.

Kind regards,

Alison Heagney
Executive Officer

Barraba Ph 6782 1662

Bingara Ph 6724 1965

Gunnedah Ph 6742 5630

Inverell Ph 6721 3656

Moree Ph 6751 1430

Narrabri Ph 6792 6196

Warialda Ph 6729 1487

Head Office Ph 6782 1662

OPTIONS FOR ENROLLING



Online

Go to the College website

www.communitycollegenin.nsw.edu.au

select your course, complete the online enrolment form and pay via our secure site.



In Person

Visit your local College office to enrol and pay. Please be aware all our Program Coordinators are part-time so the offices are not open for full business hours.



Phone

Contact your local College, enrolment and payment can be made over the phone with your credit card.

COMMUNITY COLLEGE NORTHERN INLAND INC.



RTO 90027 ABN 46 590 341 073

Community College Northern Inland Inc. is a community based, non-profit organisation, managed by a voluntary committee and run by an Executive Officer with part-time Program Coordinators located in each town.

New members to the Management Committee and suggestions or enquiries about courses are always welcome.

REFUND AND CANCELLATION POLICY (ACE Provider Consumer Protection Policy)

A copy of our Refund Policy is available on our website. Students should assume classes will run as listed unless notified or other arrangements are made with the tutor after commencement. If we cancel, we phone you and give you a full refund. Students are entitled to a refund, less \$50 administration charge, if they give the College 5 days' notice of cancellation. Less than 5 days notice the case must be discussed with the Executive Officer. No refunds will be given once the course has commenced. Attendance is the students' responsibility. For all our policies for students please go to: www.communitycollegenin.nsw.edu.au



All courses with the Nationally Recognised Training logo are accredited and comply with a national standard. These courses are recognised by employers and educational institutions Australia wide.



Qualifications offered by Community College Northern Inland Inc. are nationally recognised and accredited. Registered Training Provider – 90027.



Community College Northern Inland Inc. is proudly supported by the NSW Government, through the Department of Industry.

Funding Options 4

Business Bookings 4

Career Courses 6



Small Business 10

Hospitality & Service 14

Career Preparation 5



Pull-Out Schedule 15

Construction & Safety 19

BARRABA	21
BINGARA	22
GUNNEDAH	24
INVERELL	25
MOREE	28
NARRABRI	29
WARIALDA	31

Head Office - 92 Queen St Barraba

Ph: 6782 1662 E: info@communitycollegeni.nsw.edu.au
Mail: PO Box 20, Barraba NSW 2347

VET Manager - Vicki Zammit

M: 0437 811 424 E: vicki@communitycollegeni.nsw.edu.au
Mail: PO Box 20, Barraba NSW 2347

Finance Department - Andrea McGregor

Ph: 6782 1662 E: accounts@communitycollegeni.nsw.edu.au
Mail: PO Box 20, Barraba NSW 2347

Barraba Coordinator - Bronwyn Clinch

Ph: 6782 1662 M: 0437 036 038
E: barrabacoord@communitycollegeni.nsw.edu.au

Bingara Coordinator - Tina Simpson

Ph: 6724 1965 M: 0484 324 896
E: bingara@communitycollegeni.nsw.edu.au

Gunnedah Coordinator - Lena Curran

Ph 6742 5630 M: 0438 846 262
E: gunnedah@communitycollegeni.nsw.edu.au

Inverell Coordinator - Tania Archer

Ph: 6721 3656 M: 0429 015 009
E: inverell@communitycollegeni.nsw.edu.au

Moree Coordinator - Julieanne Farrell

Ph: 6751 1430 M: 0428 114 706
E: moree@communitycollegeni.nsw.edu.au

Narrabri Coordinator - Joan Longworth

Ph: 6792 6196 M: 0407 222 914
E: narrabri@communitycollegeni.nsw.edu.au

Warialda Coordinator - Lesley Rogers

Ph: 6729 1487 M: 0429 934 346
E: warialda@communitycollegeni.nsw.edu.au

Studying with us

FUNDING OPTIONS

Smart and Skilled

Under Smart and Skilled the NSW Government contributes to the cost of each course with the student paying the balance. To be eligible for Smart and Skilled Funding you must be:

- 15 years old or over; and
- no longer at school; and
- living or working in NSW (or an Aboriginal or Torres Strait Islander person living in specific NSW border areas); and
- an Australian citizen, Australian permanent resident, Australian permanent humanitarian visa holder or New Zealand citizen; or
- a NSW apprentice or trainee.

For more information about this program visit the Smart and Skilled website.

Community Service Obligation

Funding under Smart & Skilled is provided by the NSW Government to assist learners who need extra support or assistance to access training.

Eligible learners include:

- Australian citizens/permanent residents or humanitarian visa holders who have very low literacy, language and numeracy levels
- people with limited employability skills
- people who are unemployed or underemployed
- students with a disability
- students who are Commonwealth welfare recipients
- young disadvantaged students who need assistance transitioning to further study
- people who have other barriers to Smart and Skilled entitlement.

Training can be provided in a range of areas including:

- Foundation Skills and Job Skills Training
- Community Services Work
- Aged Care Work
- Business Administration
- Information, Digital Media and Technology.

Community College Northern Inland Inc. is an approved Smart and Skilled provider of these courses: Business and Work Skills, Aged Care and Community Services, Disability Programs, English Language, First Aid, IT and Computer Training, Short Courses. For more information contact your local Community College.

Tech Savvy for Small Business

Funding under Smart & Skilled is provided by the NSW Government to support small business owners and their staff by providing training in targeted areas such as information technology, business services and foundation skills.

Eligible learners must meet the Smart and Skilled eligibility as outlined above and be an employer or employee of a small business. A small business is defined as a business with 20 employees or less, or an annual turnover of less than \$2,000,000.

See Page 10 for a list of courses available.

ATTENTION BUSINESSES & ORGANISATIONS:

Do you need training for your staff?

At Community College Northern Inland Inc. we pride ourselves on our flexibility and ability to cater to your organisation's training needs.

We can provide:

- Customised training to suit your needs
- Compliance training
- First Aid training and refresher courses
- Training onsite or on farm
- Training in outlying rural and remote communities
- Access to government funding

If the times or dates of our courses are unsuitable for your staff or you have a query regarding training needs not listed in this course guide please contact your local Community College for more information. With seven different locations, we'll do our best to cater for your training needs in your town.

We have successfully submitted for government funding on numerous occasions and this often means we can provide training at zero cost to an organisation. Contact your local college for more information.

College facilities – venue hire available

We may be able to assist you with office or training room hire. Enquire at your local college today to find out if facilities are available.

NEXT STEPS

Employment Skills for Women

This program is designed to assist women at all stages of their career - from starting out, re-entering or looking for a change.

The course will help map out your career and life aspirations and set realistic action plans to achieve this.

It is designed to provide you with a toolkit to set your personal goals, develop skills to apply for your next job and other general life skills to give you confidence to succeed.

This course includes units of competency from *FSK20113 Certificate II in Skills for Work and Vocational Pathways*.

REGISTERED TRAINING ORGANISATION:

Community College Northern Inland Inc. (RTO 90027)

INVERELL

6 WEEKS: FRIDAYS 2 NOV - 7 DEC | 9.30AM - 3.00PM

ASHFORD

3 WEEKS: MON - TUE 26 NOV - 11 DEC | 9.30AM - 3.00PM

TINGHA

3 WEEKS: TUE & THU 6 - 22 NOV | 9.30AM - 3.00PM

COST: \$295 *The Foundations Program is FREE for most people who need this help. It is paid for by the NSW Government. Contact your local Community College for more information.*



JOB SEEKER SKILLS

Job Seeker Training

This two-day course is designed for job seekers who want to improve their resume and interview skills.

Topics covered will include job search skills, developing resumes, goal setting and interview skills to assist Job Seekers in their pathway to employment.

This course is aligned with *FSKLRG10 Use routine strategies for career planning*.

REGISTERED TRAINING ORGANISATION:

Community College Northern Inland Inc. (RTO 90027)

INVERELL

WHEN: Calling for expressions of interest

This course is FREE to eligible students. Contact your local Community College for more information.

KICKSTART

Kickstart your career

This exciting new program will provide you with a map for setting your personal goals and developing the skills you need to get the job you want.

This foundation program is designed to help you break into the industry of your choice and navigate the road from wanting the job to getting the job.

This course is a great launching pad into further training or acquiring nationally recognised tickets required for specific industries.

This course includes units of competency from the Foundation Skills Training Package.

REGISTERED TRAINING ORGANISATION:

Community College Northern Inland Inc. (RTO 90027)

GUNNEDAH

6 WEEKS: THU - FRI 1 NOV - 7 DEC | 9.30AM - 3.00PM

COST: \$585 *The Foundations Program is FREE for most people who need this help. It is paid for by the NSW Government. Contact your local Community College for more information.*

INVERELL

10 WEEKS: WED - THU 17 OCT - 20 DEC | 9.30AM - 3.00PM

COST: \$975 *The Foundations Program is FREE for most people who need this help. It is paid for by the NSW Government. Contact your local Community College for more information.*

FOUNDATION SKILLS

Need extra support?

If you need extra support to go to college, we run fun classes to help you learn new skills and prepare you for work or study.

Classes are two days per week and will help you with skills like:

- Reading
- Writing
- Numbers
- How to study towards job licences or certificates.

This course includes units of competency from the Foundation Skills Training Package.

REGISTERED TRAINING ORGANISATION:

Community College Northern Inland Inc. (RTO 90027)

WEE WAA

10 WEEKS: WED - THU | 9.30AM - 3.00PM

COST: \$975 *The Foundations Program is FREE for most people who need this help. It is paid for by the NSW Government. Contact your local Community College for more information.*

Career Courses

BUSINESS

Introduction to: Administration & Business Careers



This hands-on course will teach you practical administration skills to boost your career.

Learn crucial business administration skills including computer file management, creating documents in Microsoft Word, writing business documents and effective communication skills.

Administration skills are in demand across all industries, with this introduction you will gain practical skills and experience to benefit you in any role.

Introduction to Administration and Business Careers is an excellent preparation course for anyone wanting to study BSB30115 Certificate III in Business in 2019.

This course includes units of competency *ICTICT101 Operate a personal computer* and *ICTICT102 Operate word processing applications* from *ICT10115 Certificate I in Information, Digital Media and Technology* and *FSKWTG09 Write routine workplace texts* and *FSKOCM07 Interact effectively with others at work* from *FSK20113 Certificate II in Skills for Work and Vocational Pathways*.

REGISTERED TRAINING ORGANISATION:

Community College Northern Inland Inc. (RTO 90027)

COST: \$575*

* This course is **FREE** to eligible students. Contact your local Community College for more information.

INVERELL

WHEN: MON - TUE 5 NOV - 11 DEC | 9.30AM - 3.00PM

MOREE

WHEN: WED - THU 24 OCT - 29 NOV | 9.30AM - 3.00PM

WARIALDA

WHEN: MON - TUE 22 OCT - 27 NOV | 9.30AM - 3.00PM

INFORMATION TECHNOLOGY



ICT10115 Certificate I in Information, Digital Media and Technology

Gain skills and knowledge of small scale networks and office computer systems as well as Microsoft computer applications and a variety of digital media.

This course provides the foundation skills needed for an entry level clerical or administrative job in the IT industry, covering a range of general information and communications technology functions, to provide support to a range of industry occupations.

REGISTERED TRAINING ORGANISATION:

Community College Northern Inland Inc. (RTO 90027)

COST: TBA. You may be eligible for funding, speak to your local College for more information.

BINGARA Calling for expressions of interest for 2019

COMMUNITY SERVICES

Introduction to: Aged Care & Disability Service Careers



Did you know community care is one of Australia's highest growth industries?

This hands-on course introduces some of the key skills required by individual support workers across the disability and aged care sectors.

Learn practical skills in first aid and infection control as well as crucial digital and communication skills for the workplace.

Introduction to Aged Care & Disability Service Careers is an excellent preparation course for anyone wanting to study CHC33015 Certificate III in Individual Support in 2019.

This course includes units of competency *HLTAID003 Provide first aid*, *HLTINF001 Comply with infection prevention and control policies and procedures* from *CHC33015 Certificate III in Individual Support* and *FSKDIG03 Use digital technology for routine workplace tasks* and *FSKOCM07 Interact effectively with others at work* from *FSK20113 Certificate II in Skills for Work and Vocational Pathways*.

REGISTERED TRAINING ORGANISATION:

Community College Northern Inland Inc. (RTO 90027)

COST: \$575*

* This course is **FREE** to eligible students. Contact your local Community College for more information.

BINGARA

WHEN: TUE - WED 13 NOV - 19 DEC | 9.30AM - 3.00PM

GUNNEDAH

WHEN: MON - TUE 22 OCT - 27 NOV | 9.30AM - 3.00PM

INVERELL

WHEN: THU - FRI 1 NOV - 7 DEC | 9.30AM - 3.00PM

MOREE

WHEN: THU - FRI 15 NOV - 30 NOV | 9.30AM - 3.00PM



COMMUNITY SERVICES

Introduction to: Careers in Community Service



Have you ever considered becoming a Community Service worker?

This course will give you a taste of what is involved in this growing industry, and teach you some of the key skills required by community service workers. Learn practical skills in first aid and prioritisation as well as crucial digital and communication skills for the workplace.

Introduction to Careers in Community Service is an excellent preparation course for anyone wanting to study CHC32015 Certificate III in Community Services in 2019.

This course includes units of competency HLTAID003 Provide first aid, BSBWOR301 Organise personal work priorities and development from CHC32015 Certificate III in Community Services and FSKDIG03 Use digital technology for routine workplace tasks and FSKOCM07 Interact effectively with others at work from FSK20113 Certificate II in Skills for Work and Vocational Pathways.

REGISTERED TRAINING ORGANISATION:

Community College Northern Inland Inc. (RTO 90027)

COST: \$575*

* This course is **FREE** to eligible students. Contact your local Community College for more information.

INVERELL

WHEN: TUE - WED 30 OCT - 5 DEC | 9.30AM - 3.00PM



CHC33015 Certificate III in Individual Support (Ageing)

Gain the skills to work in one of Australia's highest growth industries. This is a community care qualification specialising in ageing, providing lots of work options for graduates.

With a qualification in Individual Support you will gain the skills to work effectively in community care and residential facilities following individualised plans to provide person-centred support due to ageing, disability or other reasons.

To complete this qualification, students must complete at least 120 hours of work experience in a residential aged care facility to allow all competencies to be assessed on-the-job.

Additional costs include: National Criminal Record Check (\$55 approx.) paid directly to NSW Police. Students must purchase two CCNI work shirts for work placement (\$50 approx.).

REGISTERED TRAINING ORGANISATION:

Community College Northern Inland Inc. (RTO 90027)

COST: Refer to student fee table on page 11.

NARRABRI

WHEN: THU - FRI | 9.00AM - 3.00PM

COMMENCING: THU 18 OCT

HOSPITALITY

Introduction to: Careers in Hospitality



Have you ever considered a career in hospitality?

In this hands-on introduction course you will learn the basic skills involved in working in the Hospitality Industry.

International Chef Friedy Meinel will introduce students to the different roles within the industry with practical demonstrations.

This fun and interactive program is a great foundation for anyone seeking to work in the exciting world of Hospitality.

This course includes units of competency FSKNUM04 Locate, compare and use highly familiar measurements for work, FSKROCM02 Engage in basic spoken exchanges at work, FSKRDG04 Read and respond to basic workplace information and FSKWTG03 Write basic workplace information from FSK10113 Certificate I in Access to Vocational Pathways.

REGISTERED TRAINING ORGANISATION:

Community College Northern Inland Inc. (RTO 90027)

COST: \$385*

* This course is **FREE** to eligible students. Contact your local Community College for more information.

INVERELL

WHEN: TUE & THU 23 OCT - 15 NOV | 10.00AM - 3.00PM

ENGINEERING

Fabrication and Welding



MEM20105 Certificate II in Engineering

MEM30305 Certificate III in Engineering
- Fabrication Trade

- Alternative to off-the-job training
- Apprentices and Trainees trained in your workplace - you have them when you need them
- Training plans to meet your workshop needs
- Qualified, experienced trainers come to you
- Specialising in workplace-delivery



Entry requirements: There are no formal entry requirements for this course.

For more information or enrolment please contact:



Vicki Zammit

Community College Northern Inland Inc. (RTO 90027)

Ph 0437 811 424

Email vicki@communitycollegenin.nsw.edu.au



Community College
NORTHERN INLAND INC.

*Right where
you need us!*

Get help to apply for emergency drought relief

Community College is supporting people in drought-afflicted rural communities by offering one-on-one **help** sessions at each of its seven campuses. Drought-affected farmers can book a session to get help making an online application for emergency drought relief - make use of campus computers and Internet, and learn how to scan documents, print your application and email your files!

Current figures show that up to **15,000 eligible farmers** have **not yet applied** for emergency drought relief.*

If you know a farmer who may be struggling with the application process, please let them know Community College is here to help.

*<http://www.abc.net.au/news/2018-07-29/drought-hit-farmers-urged-to-apply-for-assistance-payment/10047686>



FSKDIG01 Use digital technology for basic workplace tasks

One-on-one sessions include completion of the accredited Unit of Competency **FSKDIG01 Use digital technology for basic workplace tasks**.

Registered Training Organisation Community College Northern Inland (CCNI) Inc. RTO 90027

DroughtHub

Emergency Drought Relief Package

Applications for Drought Transport Subsidies now available.

Visit RAA to apply

Bookings are essential.

Call your local college for more information or

FREECALL 1800 952 264

BARRABA 02 6782 1662

FRIDAYS | 5 OCT - 30 NOV | 10.00AM - 3.00PM

BINGARA 02 6724 1965

THURSDAYS | 13 SEP - 29 NOV | 10.00AM - 3.00PM

GUNNEDAH 02 6742 5630

MONDAYS | 22 & 29 OCT 5, 19 & 26 NOV | 10.00AM - 2.00PM

INVERELL 02 6721 3656

MONDAYS & TUESDAYS | FROM 17 SEP | 10.00AM - 3.00PM

ASHFORD AND TINGHA bookings by appointment.

MOREE 02 6751 1430

MONDAYS | FROM 10 SEP | 9.30AM - 2.30PM

NARRABRI 02 6792 6196

SATURDAY | 27 OCT | ALL DAY

Additional bookings by appointment.

BURREN JUNCTION

SATURDAY | 3 NOV | ALL DAY

WARIALDA 02 6729 1487

MONDAYS | 17 SEP - 26 NOV | 10.00AM - 3.00PM

- Access to internet-connected computers
- One-on-one assistance while you complete your emergency drought relief application
- Learn new technology skills to follow up your application

The best things in life are *free*

FREE COURSES

Learning is fun, and a great way to improve self-esteem and connect with other people. Connecting with others helps us feel supported - and that's good for our health.

Over the coming weeks, Community College will be supporting eligible drought-affected farmers and small business owners by offering a range of free leisure classes at each of our seven campuses.

Join others in your farming community who are taking a day - or even just a few hours - to spend some time caring for their health, connecting, learning, or just enjoying something they haven't experienced in a while.

BARRABA

Page 21

Christmas Wreath Workshop	20 OCT
Chalkpaint Workshop	21 OCT

BINGARA

Page 22-23

Sing! Sing! Sing! - 7 sessions	3 OCT
Ukulele - 9 sessions	4 OCT
Mars Bar Cheesecake Workshop	6 OCT
Welding with Horseshoes	13 OCT
Peppermint Choc Cheesecake Workshop	13 OCT
DIY Pallet Projects	14 OCT
Hatha Yoga Classes - 4 sessions	23 OCT

INVERELL

Page 25-27

Chemical Free Gardening & Green Smoothies	22 OCT
Proud to be a Rural Woman	25 OCT
Drought Proof Vegies	29 OCT
Touch Typing - 4 sessions	1 NOV
Next Steps: Women Returning to Work - 6 sessions	2 NOV
Cheesemaking Workshop	3 NOV
Cured Meat Workshop	4 NOV
Moon Planting, Propagation & Vegie Salads	5 NOV
Summer Flowers Bag	7 NOV
Silver Ring Design Workshop	18 NOV
Composting & Sauerkraut	19 NOV
Silver Pendant Design Workshop	2 DEC

GUNNEDAH

Page 24

Introduction to Photography	25 OCT
Introduction to Pottery - 5 sessions	25 OCT
Multicultural Food Experience	29 OCT
Buttercream Basics	24 NOV
RAMHP Getting Through The Dry	6 NOV / 27 NOV

MOREE

Page 28

Photography Workshop	27 OCT
Welding Skills	20 NOV
Macramé Workshop	17 NOV

NARRABRI

Page 29-30

Painting for Pleasure - Maules Creek Hall	9 OCT
Anxiety, Stress and Gut Health	20 OCT
Re-energise Your Body for Health and Fitness	22 OCT
Photo Fun - Rowena Hall	23 OCT
Photo Fun - Burren Junction	23 OCT
Meditation for Relaxation	27 OCT
RAMHP Getting Through The Dry	29 OCT
Macramé Workshop	8 NOV
Needle Felt Fun	10 NOV
Decorated Cupcakes & Cookies	1 DEC

WARIALDA

Page 31

Leatherwork: Plaited Hatband or Lanyard	4 NOV / 15 DEC
RAMHP Getting Through The Dry	6 NOV

Small Business

TECH SAVVY SMALL BUSINESS

Are you a small business owner who wants to up-skill yourself or your staff for free? Enrol in our short business courses fee free* under the Tech Savvy for Small Business program.

Community College Northern Inland Inc. has received funding from the NSW Department of Industry for the Tech Savvy for Small Business Program. The purpose of the funding is to support small business owners and their staff by providing fully subsidised training in short courses targeting information technology, business services or foundation skills.

*See page 4 for full eligibility and funding details.

MICROSOFT WORD



Word 2013 Introduction

ICTICT102 Operate word processing applications

For those who have limited or no experience using MS Word, this course will help you with simple Word activities that are part of daily admin responsibilities.

Learn to produce simple documents using the basic features of Word including formatting, page set up, grammar and spell check.

REGISTERED TRAINING ORGANISATION:

Community College Northern Inland Inc. (RTO 90027)

COST: \$395 (Min. 6) **Fee free** training is available for eligible students. Contact your local college to discuss eligibility.

BINGARA MON - TUE 26-27 NOV | 9.30AM - 3.30PM

WARIALDA Calling for expressions of interest.



Word 2013 Intermediate

BSBITU303 Design and produce text documents

This course is focused on more advanced features of MS Word. Learn to use advanced features including formatting, tables, styles, headers and footers, mail merge and graphics.

This course would suit those who have basic day to day Word skills but want to learn more advanced techniques and functions of the software.

REGISTERED TRAINING ORGANISATION:

Community College Northern Inland Inc. (RTO 90027)

COST: \$395 (Min. 6) **Fee free** training is available for eligible students. Contact your local college to discuss eligibility.

BINGARA MON - TUE 3-4 DEC | 9.30AM - 3.30PM

INVERELL FRI & MON 26 & 29 OCT | 9.30AM - 3.00PM

WARIALDA Calling for expressions of interest.

MICROSOFT EXCEL



Excel 2013 Introduction

ICTICT105 Operate spreadsheet applications

For those who have limited or no experience using MS Excel, this course will help you with simple Excel activities that are part of daily admin responsibilities. Learn the basic features of Excel to produce simple spreadsheets and charts, create formulas, and work with functions and formatting techniques.

REGISTERED TRAINING ORGANISATION:

Community College Northern Inland Inc. (RTO 90027)

COST: \$395 (Min. 6) **Fee free** training is available for eligible students. Contact your local college to discuss eligibility.

BINGARA MON - TUE 10-11 DEC | 9.30AM - 3.30PM

WARIALDA Calling for expressions of interest.



Excel 2013 Intermediate

BSBITU304 Produce spreadsheets

This course is focused on more advanced features of MS Excel. Manage your finances and business data, display and interpret information, use relative and absolute references and more. This course would suit those who have basic Excel skills but want to learn advanced techniques and functions

REGISTERED TRAINING ORGANISATION:

Community College Northern Inland Inc. (RTO 90027)

COST: \$395 (Min. 6) **Fee free** training is available for eligible students. Contact your local college to discuss eligibility.

BINGARA MON - TUE 17-18 DEC | 9.30AM - 3.30PM

INVERELL Calling for expressions of interest.

WARIALDA Calling for expressions of interest.

CUSTOMISED TRAINING

Tailored Training Solutions



We know that every business is unique, which is why we offer customised corporate training solutions to better meet the needs of your business.

Investing in professional and employee development is investing in the success of the organisation and our training programs will equip students with new business skills and knowledge that can be applied straight away.

Whether you require specialised training or industry recognised qualifications for yourself or your staff, we can customise our courses and delivery to the specific needs of your business.

Training can be delivered in one of our modern, fully equipped training rooms or we can come to your workplace and deliver the training onsite.

Contact your local Program Coordinator to discuss your training needs today.

BUSINESS STRATEGY

Big Day Out with Virginia Eddy

If you're a business owner, then this workshop is for you!

If your business has been operating for years, or even decades, and is bubbling along well enough to meet your wants and needs, this workshop is still for you. Don't think that just because you have a track record in business, you have no need to sit for a day pondering the value of innovation, creativity, efficiencies and adding value!

If you don't invest the time thinking about how to make your business even greater, someone else will: in the next town, street or building... and then your life's work will have less value, if any value, when it's time to retire.

Any business that is not evaluating and improving efficiencies, innovating, creating and value-adding as part of its daily business, is standing still. A business that stands still can quickly attract competition!

REGISTERED TRAINING ORGANISATION:

Community College Northern Inland Inc. (RTO 90027)

COST: \$120 (Min. 6) or \$35* for eligible students. Contact your local college to discuss eligibility.

*This course is funded under the Tech Savvy Small Business program, conditions apply.

MOREE

SAT 3 NOV | 9.00AM - 4.30PM



Department
of Industry
State Training Services

Smart and Skilled

NSW Government subsidised training means students eligible for Smart and Skilled have the following fees. These may be further reduced if you are eligible for further subsidies. Use this as a guideline and get an obligation free quote. In some cases there may be zero cost.

STUDENT FEES BY QUALIFICATION:

Qualification	First Qualification	Second Qualification	Concession
MEM20105 Certificate II in Engineering	\$1000	\$1000	\$160
MEM30305 Certificate III in Engineering Fabrication Trade	\$2000	\$2000	\$240
CHC33015 Certificate III in Individual Support	\$1450	\$1750	\$240

Non Smart and Skilled: If you are not eligible for Smart and Skilled funding please ask your local Coordinator to arrange a quote and provide information about our EZI-Debit Payment plan.

Provide First Aid



HLTAID001 Provide cardiopulmonary resuscitation

HLTAID002 Provide basic emergency life support

HLTAID003 Provide first aid

This course is for anyone who is required to provide an advanced first aid response, life support, management of casualties, the incident and other first aiders, in a range of situations, including in the home, workplace or within the community, until the arrival of medical or other assistance.

This is valid for three years but the CPR (HLTAID001) component must be renewed every year.

Please note: Upon enrolling, you will receive a workbook which you must read and complete in your own time. You will need to submit the completed workbook to the trainer on the day of the course.

Additional courses can be arranged on request for groups of 10 participants.

REGISTERED TRAINING ORGANISATION: Community College Northern Inland Inc. (RTO 90027)

COST: \$160 (Min. 10)

BINGARA

MON 26 NOV | 9.00AM - 4.30PM

SAT 27 OCT | 9.00AM - 4.30PM

GUNNDAH

FRI 26 OCT | 8.30AM - 5.30PM

MON 12 NOV | 8.30AM - 5.30PM

SAT 1 DEC | 8.30AM - 5.30PM

INVERELL

SAT 17 NOV | 8.30AM - 5.00PM

THU 13 DEC | 8.30AM - 5.00PM

MOREE

THU 25 OCT | 9.00AM - 4.30PM

TUE 13 NOV | 9.00AM - 4.30PM

SAT 24 NOV | 9.00AM - 4.30PM

FRI 7 DEC | 9.00AM - 4.30PM

NARRABRI

SAT 27 OCT | 9.00AM - 4.00PM

FRI 23 NOV | 9.00AM - 4.00PM

FRI 30 NOV | 9.00AM - 4.00PM

SAT 8 DEC | 9.00AM - 4.00PM

TINGHA

SAT 24 NOV | 8.30AM - 5.00PM

WARIALDA

TUE 30 OCT | 8.30AM - 5.00PM

CHILD CARE FIRST AID



HLTAID004 Provide an emergency first aid response in an education and care setting

This course applies to educators and support staff working within an education and care setting who are required to respond to a first aid emergency, including asthmatic and anaphylactic emergencies.

The course is based on the new competencies that the Australian Children's Education and Care Quality Authority (ACECQA) has endorsed as satisfying all educator requirements for first aid, asthma and anaphylaxis qualifications.

In certain locations training will be available as a one-day workbook option with our HLTAID003 Provide first aid courses - please specify your course upon booking.

You will need to complete a workbook prior to course commencement, these can be collected from your Community College.

REGISTERED TRAINING ORGANISATION: Community College Northern Inland Inc. (RTO 90027)

COST: \$160 (Min. 10)

BINGARA

SAT 27 OCT | 9.00AM - 5.00PM

GUNNDAH

FRI 26 OCT | 8.30AM - 5.30PM

MON 12 NOV | 8.30AM - 5.30PM

SAT 1 DEC | 8.30AM - 5.30PM

TINGHA

SAT 24 NOV | 8.30AM - 5.00PM

INVERELL

SAT 17 NOV | 8.30AM - 5.00PM

THU 13 DEC | 8.30AM - 5.00PM

MOREE

THU 25 OCT | 9.00AM - 4.30PM

TUE 13 NOV | 9.00AM - 4.30PM

SAT 24 NOV | 9.00AM - 4.30PM

FRI 7 DEC | 9.00AM - 4.30PM

NARRABRI

SAT 27 OCT | 9.00AM - 4.00PM

FRI 23 NOV | 9.00AM - 4.00PM

SAT 8 DEC | 9.00AM - 4.00PM

CPR



HLTAID001 Provide cardiopulmonary resuscitation

Attend this quick course to renew your CPR certificate. Valid for 1 year.

You will need to complete a workbook prior to course commencement, these can be collected from your Community College.

REGISTERED TRAINING ORGANISATION: Community College Northern Inland Inc. (RTO 90027)

COST: \$65 (Min. 10)

BINGARA

MON 26 NOV | 9.00AM - 11.30AM
SAT 27 OCT | 9.00AM - 1:00PM

GUNNEDAH

FRI 26 OCT | 8.30AM - 12.30PM
MON 12 NOV | 8.30AM - 12.30PM
SAT 1 DEC | 8.30AM - 12.30PM

INVERELL

SAT 17 NOV | 8.30AM - 11.30AM
THU 13 DEC | 8.30AM - 11.30AM

MOREE

THU 25 OCT | 9.00AM - 11.30AM
TUE 13 NOV | 9.00AM - 11.30AM
SAT 24 NOV | 9.00AM - 11.30AM
FRI 7 DEC | 9.00AM - 11.30AM

NARRABRI

SAT 27 OCT | 9.00AM - 12.00PM
FRI 23 NOV | 9.00AM - 12.00PM
FRI 30 NOV | 9.00AM - 12.00PM
SAT 8 DEC | 9.00AM - 12.00PM

TINGHA

SAT 24 NOV | 8.30AM - 11.30AM

WARIALDA

TUE 30 OCT | 8.30AM - 11.30AM

Please Note: It is required, during the assessment, for provide first aid and/or CPR courses that demonstration of CPR must be done on the floor. Students will be required to complete two demonstrations, each of four minutes duration, before the trainer/assessor can sign off competency and your Statement of Attainment can be issued. You must be prepared to be kneeling for up to ten minutes during the CPR component assessment time.



Hospitality and Service

Food Safety Supervisor (Level 2)

SITXFSA001 Use hygienic practices for food safety

SITXFSA002 Participate in safe food handling practices

As of October 2011 food service businesses, such as restaurants, takeaway stores, pubs, clubs, caterers, bakeries and supermarkets selling hot food, are required to have a trained and notified Food Safety Supervisor (FSS) working in their business.

This course is for supervisors, team leaders, managers and/or staff who are responsible for the implementation of Food Safety. The course will provide participants with the skills and knowledge required to handle food safely during storage, preparation, display, service and disposal of food. It requires the ability to follow predetermined organisational procedures as outlined in a food safety program.

Food Safety Supervisor Certificates are valid for five years.

ISSUING REGISTERED TRAINING ORGANISATION: ATAC (RTO 90886)

COST: \$185 (Min. 8, Max. 15)

REFRESHER COST: \$120

BINGARA WED 14 NOV | 9.00AM - 5.00PM

MOREE TUE 4 DEC | 9.00AM - 5.00PM

GUNNEDAH MON 26 NOV | 9.00AM - 5.00PM

NARRABRI THU 22 NOV | 9.00AM - 5.00PM

INVERELL THU 11 OCT | 9.00AM - 5.00PM

WED 19 DEC | 9.00AM - 5.00PM

FOOD HANDLING (Level 1)

SITXFSA001 Use hygienic practices for food safety

The Food Handling certificate is for all staff involved in the preparation, storage and service of food and beverages. Participants will gain the skills and knowledge required to apply correct hygiene practices within a range of service industry operations.

This unit applies to all organisations with permanent or temporary kitchen premises or smaller food preparation or bar areas.

Course covers hygiene risks, legislative compliance, policies and procedures, hazards and cleaning equipment.

ISSUING REGISTERED TRAINING ORGANISATION:

ATAC (RTO 90886)

COST: \$100 (Min. 8, Max. 15)

BINGARA WED 14 NOV | 9.00AM - 3.00PM

GUNNEDAH MON 26 NOV | 9.00AM - 3.00PM

INVERELL THU 11 OCT | 9.00AM - 3.00PM

WED 19 DEC | 9.00AM - 3.00PM

MOREE TUE 4 DEC | 9.00AM - 3.00PM

NARRABRI THU 22 NOV | 9.00AM - 3.00PM

ESPRESSO COFFEE

SITHFAB005 Prepare and serve espresso coffee

This course applies to staff working in any hospitality organisation that serves espresso coffee beverages, including cafes, restaurants, bars, clubs, function and event venues.

On completion of this course, participants will be able to select and grind coffee, organise work areas, maintain the espresso machine, provide customer service and advise customers on all aspects of espresso coffee making. All major coffee styles will be taught.

Prerequisites: Participants must hold SITXFSA001 Use hygienic practices for food safety for accreditation. (Not required if the course is for personal development.)

ISSUING REGISTERED TRAINING ORGANISATION:

ATAC (RTO 90886)

COST: \$140 (Min. 6, Max. 10)

BINGARA FRI 23 NOV | 9.00AM - 4.00PM

INVERELL FRI 12 OCT | 9.00AM - 4.00PM
THU 20 DEC | 9.00AM - 4.00PM

MOREE WED 5 DEC | 9.00AM - 4.00PM

NARRABRI FRI 23 NOV | 9.00AM - 4.00PM

All Hospitality and Service training will be delivered and assessed by Coates Hospitality Services, trading as Australian Training & Consulting (ATAC) RTO ID 90886. Statements of Attainment will be issued to students assessed as competent by ATAC.



Term 4 Schedule

BARRABA

HELP Emergency Drought Application Assistance	FRIDAYS 5 OCT - 30 NOV	Page 8
White Card	THU 13 DEC	Page 19
Christmas Wreath Making Workshop	SAT 20 OCT	Page 21
Chalkpaint Workshop	SUN 21 OCT	Page 21
Drum Lampshade Making Workshop	SAT 10 NOV	Page 21
Hatha Yoga	MON	Page 21
Sit & Stretch Yoga	MON	Page 21
Tutoring	MON - THU By Appointment	Page 21
Photography	WED	Page 21
Ukulele	Expressions of Interest	Page 21

BINGARA

HELP Emergency Drought Application Assistance	THURSDAYS 13 SEP - 29 NOV	Page 8
Introduction to Aged Care & Disability Service Careers	TUE - WED 13 NOV - 19 DEC	Page 6
Word 2013 Introduction	MON - TUE 26 - 27 NOV	Page 10
Excel 2013 Introduction	MON - TUE 3 - 4 DEC	Page 10
Word 2013 Intermediate	MON - TUE 10 - 11 DEC	Page 10
Excel 2013 Intermediate	MON - TUE 17 - 18 DEC	Page 10
Provide First Aid	SAT 27 OCT and MON 26 NOV	Page 12
Child Care First Aid	SAT 27 OCT	Page 12
CPR	SAT 27 OCT and MON 26 NOV	Page 13
Food Handling	WED 14 NOV	Page 14
Espresso Coffee	FRI 23 NOV	Page 14
Bar Skills	WED - THU 21 - 22 NOV	Page 18
Waiting Skills	THU - FRI 15 - 16 NOV	Page 18
White Card	MON 10 DEC	Page 19
Ukulele	THURSDAYS 4 OCT - 29 NOV	Page 22
Decorative Welding	SAT 13 OCT	Page 22
DIY Pallet Projects	SUN 14 OCT	Page 22
Mars Bar Cheesecake Workshop	SAT 6 OCT	Page 23
Peppermint Choc Cheesecake Workshop	SAT 13 OCT	Page 23
Sing! Sing! Sing!	WEDNESDAYS 3 OCT - 14 NOV	Page 23
Hatha Yoga	TUESDAYS 23 OCT - 13 NOV	Page 23

GUNNEDAH

HELP Emergency Drought Application Assistance	MONDAYS 22 & 29 OCT, 5, 19 & 26 NOV	Page 8
Kickstart your career	THU - FRI 1 NOV - 7 DEC	Page 5
Introduction to Aged Care & Disability Service Careers	MON - TUE 22 OCT - 27 NOV	Page 6
Provide First Aid	FRI 26 OCT / MON 12 NOV / SAT 1 DEC	Page 12
CPR	FRI 26 OCT / MON 12 NOV / SAT 1 DEC	Page 13
Child Care First Aid	FRI 26 OCT / MON 12 NOV / SAT 1 DEC	Page 12
Food Handling	MON 26 NOV	Page 14
RSA	WED 7 NOV	Page 18
RCG	THU 8 NOV	Page 18
White Card	THU 15 NOV	Page 19
Confined Spaces	FRI 23 NOV	Page 19
Forklift	MON - WED 12 - 14 NOV	Page 20
Computer Basics for Seniors	MON / WED / THU By Appointment	Page 24
Introduction to Photography	THU 25 OCT	Page 24
Introduction to Pottery	THU 25 OCT - 22 NOV	Page 24
Buttercream Basics	SAT 24 NOV	Page 24
Multicultural Food Experience	MON 29 OCT	Page 24
Getting Through the Dry	TUE 6 NOV / TUE 27 NOV	Page 24

Term 4 Schedule

INVERELL

HELP Emergency Drought Application Assistance	MON - TUE	Page 8
Employment Skills for Women	FRIDAYS 2 NOV - 7 DEC	Page 5
Employment Skills for Women - Ashford	MON - TUE 26 NOV - 11 DEC	Page 5
Employment Skills for Women - Tingha	TUE & THU 6 - 22 NOV	Page 5
Kickstart your Career	WED-THU 17 OCT - 20 DEC	Page 5
Introduction to Administration & Business Careers	MON - TUE 5 NOV - 11 DEC	Page 6
Introduction to Aged Care & Disability Service Careers	THU - FRI 1 NOV - 7 DEC	Page 6
Introduction to Careers in Community Services	TUE - WED 30 OCT - 5 DEC	Page 7
Introduction to Careers in Hospitality	TUE & THU 23 OCT - 15 NOV	Page 7
Word 2013 Intermediate	FRI & MON 26 & 29 OCT	Page 10
Provide First Aid	SAT 17 NOV / THU 13 DEC	Page 12
Provide First Aid - Tingha	SAT 24 NOV	Page 12
CPR	SAT 17 NOV / THU 13 DEC	Page 13
CPR - Tingha	SAT 24 NOV	Page 13
Child Care First Aid	SAT 17 NOV / THU 13 DEC	Page 12
Child Care First Aid - Tingha	SAT 24 NOV	Page 12
Food Handling	THU 11 OCT / WED 19 DEC	Page 14
Espresso Coffee	FRI 12 OCT / THU 20 DEC	Page 14
RSA	TUE 9 OCT / MON 17 DEC	Page 18
RCG	WED 10 OCT / TUE 18 DEC	Page 18
White Card	THU 30 OCT / TUE 11 DEC	Page 19
Confined Spaces	TUE 20 NOV	Page 19
Work Safely at Heights	MON 19 NOV	Page 19
Forklift	MON - WED 29 - 31 OCT / MON - WED 10 - 12 DEC	Page 20
Beginners Computer Training	MONDAYS 15 & 22 OCT	Page 25
Touch Typing	THU 1 - 22 NOV	Page 25
Build a Business Website	MON & TUE 12 - 20 NOV	Page 25
Suicide Prevention Workshop	FRI 16 NOV	Page 25
Cured Meat Workshop	SAT 3 NOV	Page 26
Soft Cheese Workshop	SUN 4 NOV	Page 26
Beer Brewing Workshop	FRI 19 OCT	Page 26
Drought Proof Vegies	FRI 19 OCT	Page 26
Chemical Free Gardening & Green Smoothies	MON 22 OCT	Page 26
Moon Planting, Propagation & Vegie Salads	MON 5 NOV	Page 26
Composting & Sauerkraut	MON 19 NOV	Page 26
Summer Flowers Bag	WED 7 NOV	Page 27
Silver Ring Design Workshop	SUN 18 NOV	Page 27
Silver Pendant Design Workshop	SUN 2 DEC	Page 27

WARIALDA

HELP Emergency Drought Application Assistance	MONDAYS 17 SEP - 26 NOV	Page 8
Introduction to Administration & Business Careers	MON - TUE 22 OCT - 27 NOV	Page 6
Word 2013 Introduction	Expressions of Interest	Page 10
Word 2013 Intermediate	Expressions of Interest	Page 10
Excel 2013 Introduction	Expressions of Interest	Page 10
Excel 2013 Intermediate	Expressions of Interest	Page 10
Provide First Aid	TUE 30 OCT	Page 12
CPR	TUE 30 OCT	Page 13
RSA	TUE 23 OCT	Page 18
RCG	TUE 13 NOV	Page 18
Roo-Hide Whip Making 8-Strand	SAT - SUN 17 - 18 NOV	Page 31
Touch Typing	TUE 13 NOV - 4 DEC	Page 31
Getting Through the Dry	TUE 6 NOV	Page 31
Leatherwork Plaited Hatband or Lanyard	SUN 4 NOV / SAT 15 DEC	Page 31

MOREE

HELP Emergency Drought Application Assistance	MONDAYS	Page 8
Introduction to Administration & Business Careers	WED - THU 24 OCT - 29 NOV	Page 6
Introduction to Aged Care & Disability Service Careers	THU - FRI 15 NOV - 30 NOV	Page 6
Business Big Day Out	SAT 3 NOV	Page 11
Provide First Aid	THU 25 OCT / TUE 13 NOV / SAT 24 NOV / FRI 7 DEC	Page 12
CPR	THU 25 OCT / TUE 13 NOV / SAT 24 NOV / FRI 7 DEC	Page 13
Child Care First Aid	THU 25 OCT / TUE 13 NOV / SAT 24 NOV / FRI 7 DEC	Page 12
Food Handling	TUE 4 DEC	Page 14
Espresso Coffee	TUE 4 DEC	Page 14
RSA	TUE 11 DEC	Page 18
RCG	WED 12 DEC	Page 18
Bar Skills	THU - FRI 13 - 14 DEC	Page 18
White Card	TUE - WED 20 - 21 NOV	Page 19
Chemical User	WED 28 NOV	Page 20
Welding for Beginners	TUESDAYS 30 OCT - 4 DEC	Page 28
Welding Skills	SAT 20 OCT	Page 28
Personalised Computer, iPad or iPhone Training	By Appointment	Page 28
Macramé Workshop	SAT 17 NOV	Page 28
Photography Workshop	SAT 27 OCT	Page 28

NARRABRI

HELP Emergency Drought Application Assistance	SATURDAYS 27 OCT - 3 NOV	Page 8
Foundation Skills (Wee Waa)	WED-THU	Page 5
CHC33015 Certificate III in Individual Support (Ageing)	THU-FRI	Page 7
Provide First Aid	SAT 27 OCT / FRI 23 NOV / FRI 30 NOV / SAT 8 DEC	Page 12
CPR	SAT 27 OCT / FRI 23 NOV / FRI 30 NOV / SAT 8 DEC	Page 13
Child Care First Aid	SAT 27 OCT / FRI 23 NOV / SAT 8 DEC	Page 12
Food Handling	THU 22 NOV	Page 14
Espresso Coffee	FRI 23 NOV	Page 14
RSA	WED 28 NOV	Page 18
RCG	THU 29 NOV	Page 18
Customer Service	THU 6 DEC	Page 18
White Card	THU 29 NOV	Page 19
Health & Safety Representative	TUE 4 / WED 5 / THUR 6 / TUE 11 / WED 12 DEC	Page 19
Confined Spaces	THU 22 NOV	Page 19
Work Safely at Heights	WED 21 NOV	Page 19
Forklift	WED - FRI 28 - 30 NOV	Page 20
Chemical User	MON - TUE 12 - 13 NOV	Page 20
RMS Developer	WED - FRI 14 - 16 NOV	Page 20
Christmas Cake Art	WEDNESDAYS 7 - 28 NOV	Page 29
Christmas Cupcakes and Cookies	SAT 1 DEC	Page 29
Getting Through the Dry	MON 29 OCT	Page 29
Mental Health First Aid	WED - THU 14 - 15 NOV	Page 29
Personalised Computer Training	By Appointment	Page 29
Stay on Top of Your Money	WED 24 OCT	Page 30
Camera Workshop	SAT 17 NOV	Page 30
Anxiety, Stress and Gut Health	SAT 20 OCT	Page 30
Re-energise Your Body for Health and Fitness	MON 22 OCT	Page 30
Meditation for Relaxation	SAT 27 OCT	Page 30
Macramé	THU 8 NOV	Page 30
Needle Felt Fun	SAT 10 NOV	Page 30
Painting for Pleasure - Maules Creek Hall	TUE 9 OCT	Page 30
Photo Fun - Rowena Hall & Burren Junction	TUE 23 OCT	Page 30

Hospitality and Service

RSA

SITHFAB002 Provide responsible service of alcohol

In NSW, it's a requirement of the NSW Liquor, Gaming and Racing - Justice (OLGR) that anyone working within a licensed alcohol-serving venue hold an OLGR approved RSA Competency Card. You will need your RSA if you are involved in the sale or service of alcohol in your employment or as a volunteer at a fundraising or community event. This training meets the requirements of the national unit of competency SITHFAB002 Provide responsible service of alcohol.

Upon completion you will be issued with an interim certificate (valid for 90 days), which together with your identity documents should be presented to a Service NSW outlet such as the Roads and Maritime Services (RMS) to process your RSA photo competency card.

RSA Competency Cards are valid for five years.

ISSUING REGISTERED TRAINING ORGANISATION:

ATAC (RTO 90886)

COST: \$190 (Min. 10)

GUNNEDAH	WED 7 NOV 9.00AM - 4.00PM
INVERELL	TUE 9 OCT 9.00AM - 4.00PM MON 17 DEC 9.00AM - 4.00PM
MOREE	TUE 11 DEC 9.00AM - 4.00PM
NARRABRI	WED 28 NOV 9.00AM - 4.00PM
WARIALDA	TUE 23 OCT 9.00AM - 4.00PM

BAR SKILLS

SITXFSA001 Use hygienic practices for food safety

SITHFAB001 Clean and Tidy bar areas

SITHFAB003 Operate a bar

This course applies to all staff working in hospitality organisations that run a bar, including hotels, restaurants, clubs, cafes and wineries.

Covering setting up and bar display, setting up your work area, taking customer orders, processing payments, preparing and serving a variety of beverages, glassware and bar etiquette, bar duties, hygiene and appearance.

Please bring current photo ID with you on the day.

Prerequisites: Students must be 18 years or older, hold a current RSA and bring this to the course.

ISSUING REGISTERED TRAINING ORGANISATION:

ATAC (RTO 90886)

COST: \$295 (Min. 8, Max. 15)

BINGARA	WED - THU 21 - 22 NOV 9.00AM - 4.00PM
MOREE	THU - FRI 13 - 14 DEC 9.00AM - 4.00PM

RCG

SITHGAM001 Provide responsible service of gambling

The NSW Gaming Laws mandate Responsible Conduct of Gambling training for all people working in the gaming industry. The Responsible Conduct of Gambling (RCG) course helps to promote safety (harm minimisation) in venues where there are gaming machines, including how to recognise gambling problems and addiction.

Training is aimed at all persons working in the hospitality industry with gaming machines.

RCG Competency Cards are valid for five years.

ISSUING REGISTERED TRAINING ORGANISATION:

ATAC (RTO 90886)

COST: \$135 (Min. 10)

GUNNEDAH	THU 8 NOV 9.00AM - 4.00PM
INVERELL	WED 10 OCT 9.00AM - 4.00PM TUE 18 DEC 9.00AM - 4.00PM
MOREE	WED 12 DEC 9.00AM - 4.00PM
NARRABRI	THU 29 NOV 9.00AM - 4.00PM
WARIALDA	TUE 13 NOV 9.00AM - 4.00PM

CUSTOMER SERVICE

SITXCCS007 Enhance customer service experiences

This course applies to those who deal directly with customers on a daily basis and who operate independently or with limited guidance from others. It includes senior frontline sales personnel, supervisors and managers who use discretion and judgment to provide quality customer service experiences.

ISSUING REGISTERED TRAINING ORGANISATION:

ATAC (RTO 90886)

COST: \$115 (Min. 10, Max. 20)

NARRABRI	THU 6 DEC 9.00AM - 4.00PM
-----------------	-----------------------------

WAITING SKILLS

SITXFSA001 Use hygienic practices for food safety

SITHFAB007 Serve food and beverage

This course is aimed at all staff who want the basic skills to work in the food industry as a waitperson.

Training will provide you with the skills and knowledge required to serve food and beverages to customers in a casual dining setting including hotels, clubs, cafes and coffee shops.

ISSUING REGISTERED TRAINING ORGANISATION:

ATAC (RTO 90886)

COST: \$190 (Min. 8, Max. 15)

BINGARA	THU - FRI 15 - 16 NOV 9.00AM - 4.00PM
----------------	---

White Card

CPCCWHS1001 Prepare to work safely in the construction industry

This unit of competency specifies the mandatory work health and safety training required prior to undertaking construction work.

The unit requires the person to demonstrate personal awareness and knowledge of health and safety legislative requirements in order to work safely and prevent injury or harm to self and others.

It covers identifying and orally reporting common construction hazards, understanding basic risk control measures, and identifying procedures for responding to potential incidents and emergencies. It also covers correctly selecting and fitting common personal protective equipment (PPE) used for construction work.

This basic program is required for all persons working on construction sites in Australia.

This course includes units of non-accredited training including: Completing work related forms.

Prerequisites: Must be 14 years or over. Must bring 100 points of ID including photo ID. Wear enclosed shoes, long sleeve shirt and long pants during training.

ISSUING REGISTERED TRAINING ORGANISATION: Hunter Plant Operator Training School (RTO 90352)

COST: \$145 (Min. 10, MAX 13) **Fee free** training is available for eligible students. Contact your local college to discuss eligibility.

BOOKING DEADLINE: Bookings close 10 days prior to the commencement of the courses.

BARRABA THU 13 DEC | 9.00AM - 4.00PM

BINGARA MON 10 DEC | 9.00AM - 4.00PM

GUNNEDAH THU 15 NOV | 9.00AM - 4.00PM

INVERELL TUE 30 OCT | 9.00AM - 4.00PM

TUE 11 DEC | 9.00AM - 4.00PM

MOREE WED 28 NOV | 9.00AM - 4.00PM

NARRABRI THU 29 NOV | 9.00AM - 4.00PM

CONFINED SPACES

RIIWH5202D Enter and work in confined spaces

This course is suitable for all persons working on, or intending to work on construction sites or other situations where there may be confined spaces.

The course covers all aspects of working safely in confined spaces and safety equipment used, including: plan and prepare for entering and working in confined spaces, safety requirements, signage and equipment, gaining access and maintaining communication, record keeping and legislation.

Confined Spaces Certificates are valid for 5 years.

This course includes units of non-accredited training including: Completing work related forms.

Prerequisites: Must bring 100 points of ID. Wear steel cap boots, long sleeve shirt and long pants during training.

ISSUING REGISTERED TRAINING ORGANISATION:

Hunter Plant Operator Training School (RTO 90352)

COST: \$250 (Min. 6, Max. 12)

Fee free training is available for eligible students. Contact your local college to discuss eligibility.

BOOKING DEADLINE: Bookings close 10 days prior to the commencement of the courses.

GUNNEDAH FRI 23 NOV | 9.00AM - 4.00PM

INVERELL TUE 20 NOV | 9.00AM - 4.00PM

NARRABRI THU 22 NOV | 9.00AM - 4.00PM

HEIGHTS

RIIWH5204D Work safely at heights

The HPOTS working at Heights course was developed to provide what was needed and wanted by employers in the manufacturing, construction and mining industries.

Trainees are made familiar with the hazards of working from heights, the correct procedures to deploy and use fall restraint and arrest equipment and harnesses, static lines, lanyards and inertia reels and procedures to reduce risk to themselves and others.

This course includes units of non-accredited training including: Completing work related forms.

Prerequisites: Must bring 100 points of ID. Wear steel cap boots, long sleeve shirt and long pants during training.

ISSUING REGISTERED TRAINING ORGANISATION:

Hunter Plant Operator Training School (RTO 90352)

COST: \$220 (Min. 6, Max. 12)

Fee free training is available for eligible students. Contact your local college to discuss eligibility.

BOOKING DEADLINE: Bookings close 10 days prior to the commencement of the courses.

INVERELL MON 19 NOV | 9.00AM - 4.00PM

NARRABRI WED 21 NOV | 9.00AM - 4.00PM

Construction and Safety

FORKLIFT

TLILIC2001 Licence to operate a forklift truck

This program provides practical training and the knowledge required to complete the WorkCover assessment for Forklift license.

The program includes pre-start inspections and operation of the forklift to undertake varied tasks and general safety.

Topics covered:

- Risk assessment
- Driver safety
- Pre-operational inspections
- Load assessment
- Site assessment
- Operation techniques
- Shutdown inspection

Prerequisites: Must be 18 years or over. Must bring 100 points of ID including photo ID. Wear steel cap boots, long sleeve shirt and long pants during training.

This course includes units of non-accredited training including: Completing work related forms.

ISSUING REGISTERED TRAINING ORGANISATION:

Hunter Plant Operator Training School (RTO 90352)

COST: \$850

Fee free training is available for eligible students. Contact your local college to discuss eligibility.

BOOKING DEADLINE: Bookings close 10 days prior to the commencement of the courses.

GUNNDAH MON - WED 12 - 14 NOV | 9.00AM - 4.00PM

INVERELL MON - WED 29 - 31 OCT | 9.00AM - 4.00PM
MON - WED 10 - 12 DEC | 9.00AM - 4.00PM

NARRABRI WED - FRI 28 - 30 NOV | 9.00AM - 4.00PM

HEALTH & SAFETY REPRESENTATIVE

HSR Five-day SafeWork NSW approved training

This course is designed for elected Health and Safety Representatives, Health and Safety committee members, managers and supervisors or anyone within an organisation who has an interest in Work Health & Safety.

Prerequisites: To be eligible for the refresher training course students must provide proof that they have previously completed the five-day HRS course in the form of the original course certificate issued by the SafeWork NSW ATP.

ISSUING REGISTERED TRAINING ORGANISATION:

ATAC (RTO 90886)

COST: \$635 (Min. 8) **REFRESHER COST:** \$215 (Min. 8)

NARRABRI

TUE 4 / WED 5 / THUR 6 / TUE 11 / WED 12 DEC
9.00AM - 4.00PM

CHEMICAL USER

AHCCHM303 Prepare and apply chemicals

AHCCHM304 Transport and store chemicals

Chemical user training is required by law for any person using chemicals as part of their work.

This course covers basic chemical safety rules, transporting, handling and storing chemicals, and legislation surrounding use of chemicals in the workplace, personal and environmental safety and container disposal.

It is nationally recognised for 5 years and enables the holder to legally use restricted chemicals unsupervised.

Chemical user re-accreditation course needs to be completed before the current ticket expires. **Refreshers** only attend the second day of this two-day Chemical Users course.

Prerequisites for re-accreditation: Participants must hold a current Chemical User qualification that has not expired and bring this to be sighted by the trainer on the day of the course.

ISSUING REGISTERED TRAINING ORGANISATION:

ATAC (RTO 90886)

COST: \$355 (Min. 8) **REFRESHER:** \$265 (2nd day only)

MOREE TUE - WED 20 - 21 NOV | 9.00AM - 4.00PM

NARRABRI MON - TUE 12 - 13 NOV | 9.00AM - 4.00PM

RMS DEVELOPER

RIIWH5201D Work safely and follow WHS policies and procedures

RIIRIS301D Apply risk management processes

RIIGOV401D Apply, monitor and report on compliance systems

RIICWD503D Prepare work zone traffic management plan

For personnel required to design new traffic management plans for road works, produce major upgrades of standard plans and/or inspect traffic control plans on any road construction site.

Students will undertake three days of classroom training (theory and written assessment component). Within the following three months, students must prepare a final submission (Work Zone Traffic Management Plan with relevant evidence) to be deemed competent and receive their RMS Statement of Completion. This will allow them to work for a period of 90 days while they wait for their RMS Photo Card to be issued.

The final submission fee is in addition to the classroom fee, and payable to ATAC directly. Upon successful completion of the above, students will be issued with an RMS Photo Card.

Prerequisites: Current Implement TCP's qualification (or valid yellow ticket); or Current Select & Modify Traffic Control Plans; or Current Design & Inspect Traffic Control Plans; or relevant tertiary qualification/s in road construction, engineering or civil construction.

ISSUING REGISTERED TRAINING ORGANISATION:

ATAC (RTO 90886)

COST: \$695

NARRABRI WED - FRI 14 - 16 NOV | 9.00AM - 4.00PM

Barraba Community College 92 Queen St, Barraba

Monday - Friday 9.00AM - 4.00PM (may vary during school holidays)

Phone: 6782 1662 Mob: 0437 036 038 Email: barrabacoord@communitycollegeni.nsw.edu.au

HOBBIES / LEISURE

Christmas Wreath Making Workshop

Create your own Christmas wreath in an afternoon. Hosted by The Polkadot Coffee Room.

COST: \$105* includes afternoon tea and all materials required to complete a wreath. *FREE* for eligible drought-affected farmers and businesses.* (Min.6 / Max. 8)

WHEN: SAT 20 OCT | 2.30PM - 4.30PM

VENUE: The Polkadot Coffee Room

Chalkpaint Workshop

Learn how to transform a small piece of furniture with ease using chalkpaint. Hosted by The Polkadot Coffee Room.

Bring along your own small piece of furniture to work on during the day. Wear your old and comfy clothes for a relaxed day out.

COST: \$175* includes morning tea, lunch, the paint and other materials. *FREE* for eligible drought-affected farmers and businesses.* (Min.6 / Max. 10)

WHEN: SUN 21 OCT | 10.00AM - 3.00PM

VENUE: The Polkadot Coffee Room

Drum Lampshade Making Workshop

Learn how to make your own 30cm drum lampshade or pendant light. Design your own to match your upholstery, curtains or room theme.

Bring along your choice of fabric (100cm x 30cm) for your own personal touch. If you bring your own fabric a light to medium weight cotton is best, not a heavy upholstery fabric. At the end of the day you will have a completed lampshade for your own home.

COST: \$195* includes lampshade kit and lunch. *FREE* for eligible drought-affected farmers and businesses.*

If you wish to purchase the covering fabric an additional \$15 is required, payable direct to the tutor.

WHEN: SAT 10 NOV | 11.00AM - 2.00PM

*In Term 4, Community College is offering a range of leisure classes ***FREE FREE** for eligible drought-affected farmers and businesses who live within its campus regions.*

Join others in the farming community and spend some time caring for your health, connecting, learning, or just enjoying something new. Call your local campus to discuss your eligibility.

Ukulele Lessons

Are you interested in learning the ukulele? Give us a call and if sufficient people are interested we will arrange some lessons. Ukuleles can be purchased from approx. \$50 if you don't have one.

HOBBIES / LEISURE

Photography

The **Barraba Shutterbug photography group** welcomes new participants.

Photography is 'all about the light' capturing it in its many forms and not about the camera or lenses that you may or may not have. The 'Shutterbugs' is a very inclusive environment so that you can grow to be more confident and expand your own photography experience. The group meets on the 2nd Wednesday of the month at the Claypan at 5.30pm.

Margaret Harris, convener of the group said "Bring a list of things you like help with ... it may be getting your camera out of its box, or help getting off auto or perhaps simple photo editing. The more members we have, will mean we will be able to bring in expert help when and as needed."

For more information Contact Margaret Harris 0428 661 439 or visit Barraba Shutterbugs on Facebook.

Barraba Learning Centre - Tutoring

One-to-one homework, tutoring and extension learning support with Lesley Grigg. Suitable for school students and adults.

Each afternoon Monday to Thursday, book a time between 3.30PM and 6.00PM.

COST: 1hr \$45 or 30min \$30 payable direct to Lesley.

Booking essential, please discuss payment options with Lesley, 0428 228 109, when you book a time.

HEALTH AND WELLBEING

Hatha Yoga

Yoga will assist with increased flexibility, range of movement, strength and balance as well as offering breathing and relaxation to reduce stress and tension and encourage improved sleep.

Classes suitable for beginners to intermediate levels.

COST: \$15 per session

WHEN: Mondays from 22 OCT | 6.00PM - 7.15PM

VENUE: Barraba Rugby Club

Sit & Stretch Yoga

Utilising a chair for support, this is perfect for anyone recovering from injury or illness, or with mobility issues, or weight/age related issues to practice yoga without the need to get down onto the floor.

COST: \$10 per session

WHEN: Mondays from 22 OCT | 2.15PM - 3.55PM

VENUE: Barraba Rugby Club

Bingara Community College 6 Riddell St, Bingara

Monday - Thursday 9.00AM - 4.00PM (may vary during school holidays)

Phone: 6724 1965 Mob: 0438 546 519 Email: bingara@communitycollegeni.nsw.edu.au

HOBBIES / LEISURE

DIY Projects with Wooden Pallets

Get creative using pallets - repurpose them for your DIY project. There are so many items and decorations that can be made from this rustic wood.

Using pallets is a very eco-friendly and green thing to do. Many pallet crafts can be created over a weekend or two. A few hours of DIY work with a good dose of creativity, pallets can help you create your own project, without limiting good taste and style. Everything from pallet home decor, wall hangings, outdoor ideas, storage, and so much more.

COST: \$300* (All materials supplied.) **FREE*** for eligible drought-affected farmers and businesses.

WHEN: SUN 14 OCT | 10.00AM - 4.00PM

VENUE: Bingara Central School



*In Term 4, Community College is offering a range of leisure classes ***FREE FREE** for eligible drought-affected farmers and businesses who live within its campus regions.*

Join others in the farming community and spend some time caring for your health, connecting, learning, or just enjoying something new. Call your local campus to discuss your eligibility.

HOBBIES / LEISURE

Ukulele for First Timers

This course will have you developing unexpected musical skills while learning to play the Ukulele.

Enjoy playing and singing with others in a fun and relaxed environment.

Students will require a Ukulele and other equipment which will be advised upon enrolment. Remember to bring a water bottle.

COST: This course is subsidised by the College for concession card holders at \$95 per person. **FREE*** for eligible drought-affected farmers and businesses.

WHEN: Thursdays 4 OCT - 29 NOV | 1.00PM - 3.00PM



Decorative Welding using horseshoes

Horseshoes are a classic symbol of the wild west, games, and luck. Apart from throwing them at a pole, they also have many other uses you might have not even considered, particularly great horseshoe crafts.

If you want to try your luck with horseshoe crafts, check out our project ideas and see if you find something you want to try. Whilst you are at it you will learn the basic principles of welding with an ARC welder and a MIG Welder. Wear cotton clothing, protective boots and bring safety glasses if you have them. A number of projects will be on offer!

COST: \$350* (All materials supplied.) **FREE*** for eligible drought-affected farmers and businesses.

WHEN: SAT 13 OCT | 10.00AM - 4.00PM

VENUE: Bingara Central School

HOBBIES / LEISURE

SING! SING! SING! with Lyn Hill

Lyn is a local with many years of experience conducting community choirs including the Inverell Singers group and the Gwydir Singers. Pianist Keiko Robertson is a concert pianist with local and international experience.

Join Sing! Sing! Sing! for the enjoyment of singing with others in a musical and supportive environment. Connect with other people in the community in a positive and supportive way and enjoy expressing yourself via singing a variety of music. Be relaxed and energised by participating.

Learn to sing a variety of songs together, gradually gaining the ability to read music and learning to recognise basic musical terms.

COST: This course is subsidised by the College for concession card holders at \$95* per person. *FREE* for eligible drought-affected farmers and businesses.*

WHEN: Wednesdays 3 OCT - 14 NOV | 10.00AM - 12.00PM

Cheesecake Workshops with Nessa's Baked Delights

Learn to create your own delicious cheesecakes and take home your creations.

Mars Bar Cheesecake

COST: \$50* *FREE for eligible drought-affected farmers and businesses.*

WHEN: SAT 6 OCT | 10.00AM - 4.00PM

VENUE: Bingara Central School

Peppermint Choc Cheesecake

COST: \$50* *FREE for eligible drought-affected farmers and businesses.*

WHEN: SAT 13 OCT | 10.00AM - 4.00PM

VENUE: Bingara Central School

HEALTH AND WELLBEING

Hatha Yoga

For the men of the community... "calm your mind, strengthen your body, nourish your soul...."

Hatha is a style of yoga that focuses on building physical strength as well as cultivating harmony, mentally and emotionally. Join trainer Karen Bishton as she works with the body, into postures and breathing/relaxation techniques, towards calming the mind, strengthening the body and nourishing the soul.

Contact Karen on 0429 647 928 with any enquiries.

COST: *FREE* for eligible drought-affected farmers and businesses.*

WHEN: Tuesdays 23 OCT - 13 NOV | 5.30PM - 6.30PM



Needlecraft

Come and work on your own project in a social environment.

WHEN: Wednesdays | 9.30AM - 12.30PM

Pallamallawa Sewing and Craft

Group meets on Thursday evenings during school terms.

WHEN: Thursdays | 7.00PM - 10.00PM

VENUE: Pallamallawa School



Gunnedah Community College 39 Chandos St, Gunnedah

Monday - Friday 8.30AM - 3.00PM (may vary during school holidays)

Phone: 6742 5630 Mob: 0438 846 262 Email: gunnedah@communitycollegeni.nsw.edu.au

COMPUTER COURSES

Computer Basics for Seniors at our BFS Kiosk



We have a Broadband for Seniors Kiosk on site to assist all seniors over 50 to learn the basics of working with computers and the Internet, free of charge. We try our best to run our classes on a one-on-one basis where possible, with no more than 3 people in a session.

The Kiosk is run with the help of volunteer tutors, so in order to avoid disappointment please call in advance to reserve a spot.

WHEN: MON / WED / THU | 10.00AM - 12.00PM
(excluding School Holidays and Public Holidays)

HOBBIES / LEISURE

Introduction to Photography

Improve every picture you take with this exciting introduction to the fundamentals of photography.

Become better acquainted with your camera and all its functions. This course is ideal if you are a beginner who is curious about photography and suitable for all those who want to get creative with their picture taking.

TUTOR: Hayley Hausfeld

COST: \$50* FREE for eligible drought-affected farmers and businesses.

WHEN: THU 25 OCT | 11.00AM - 2.00PM

Introduction to Pottery

These pottery classes are ideal for beginners and for those who would like to learn more about this wonderful art form. Be guided by experienced and passionate members of the Gunnedah Pottery Club.

COST: \$100* plus approx \$20 for materials. FREE* for eligible drought-affected farmers and businesses. (Min. 6 Max. 8)

WHEN: Thursdays 25 OCT - 22 NOV | 6.00PM - 8.30PM

VENUE: Gunnedah Pottery Club

*In Term 4, Community College is offering a range of leisure classes *FREE FREE for eligible drought-affected farmers and businesses who live within its campus regions.*

Join others in the farming community and spend some time caring for your health, connecting, learning, or just enjoying something new. Call your local campus to discuss your eligibility.

HOBBIES / LEISURE

Buttercream Basics with Sweet by Choice

Up your cupcake game with this hands-on buttercream workshop and impress your friends.

Learn how to make fluffy buttercream icing, how to colour your buttercream and what all those piping tips do.

The cost includes 6 premade cupcakes ready for icing, 24 piece piping nozzles, silicone bag and adapter kit.

COST: \$75* FREE for eligible drought-affected farmers and businesses.

WHEN: SAT 24 NOV | 9.30AM - 11.30AM

Diversity for Drought

A Multicultural Food Experience

Hats off to our wonderful farmers who have been feeding Australia through the generations. Now it is your turn.

We would like to invite you to attend our multi-cultural food experience. Members of the Gunnedah community will be bringing along a multi-cultural dish to share. We are hoping for a big variety of international cuisine which will highlight the various backgrounds which make up this wonderful town of Gunnedah.

We are offering this to farmers in drought afflicted rural communities. All you have to do is come along and sample the delights. Take a day out from the hard yards and enjoy some yummy cuisine.

If you are a member of the local community and wish to provide a dish, please give us a call on 6742 5630

WHEN: MON 29 OCT | 12.00PM - 2.00PM

HEALTH AND WELLBEING

Getting Through the Dry



Getting Through The Dry is RAMPH's brand new training package with a focus on drought-related stress.

During this session the facilitator will provide information and insight into drought-related stress, strategies to manage stress and ways to take action. You will leave with a better understanding of how drought impacts on people and the community and where to find support. This is a free session and anyone can attend.

This course is conducted by Rural Adversity Mental Health Program (RAMHP).

COST: FREE. Bookings essential.

WHEN: TUE 6 NOV | 10.30AM - 12.00PM

TUE 27 NOV | 10.30AM - 12.00PM

Inverell Community College 42-44 Campbell St, Inverell

Monday - Friday 9.00AM - 5.00PM (may vary during school holidays)

Phone: 6721 3656 Mob: 0429 015 009 Email: inverell@communitycollegeni.nsw.edu.au

COMPUTER COURSES

Personalised Computer Training

The College Computer Room, which runs on Windows 10 with Microsoft 2013, is available for Corporate Computer Training and Group Training and also bookings by individuals or small groups who wish to undertake specific tuition on programs or applications. You set the agenda, we provide the training, whether it's navigating Windows 10, using Publisher, Excel, Word and other programs or even using the Internet. You can arrange as many lessons as you need.

WHERE: Inverell Community College Computer Room or your workplace.

COST: \$65 per hour aimed at groups of up to four people. (This includes a free initial meeting and appraisal of your needs to ensure we meet your specific requirements.)

Beginners Computer Training



ICTICT101 Operate a personal computer

If you're new to computers or feeling a bit rusty, this beginners computer course will get you up-and-running. Learn how to operate your personal computer from Internet browsing to email, using basic software, file management and backing up your important documents.

This course covers all the basics of computer operation and is a good precursor to other introduction courses like Word and Excel.

COST: \$100 (Max. 10) *Fee free training is available for eligible students. Contact your local Community College for more information.*

WHEN: Mondays 15 & 22 OCT | 9.30AM - 12.30PM

Touch Typing

A blended training course with four face-to-face sessions and home study to build your skills.

Using Typequick, a proven way to learn to touch type at your own pace, you will be guided through interactive lessons.

This course is aligned with *FSKDIG03 Use digital technology for routine workplace tasks* from *FSK20113 Certificate II in Skills for Work and Vocational Pathways*.

REGISTERED TRAINING ORGANISATION:

Community College Northern Inland Inc. (RTO 90027)

COST: \$95 *Fee free training is available for eligible students. Contact your local Community College for more information.*

WHEN: Thursdays 1 - 22 NOV | 10.00AM - 11.00AM

COMPUTER COURSES

Build a Successful Business Website

Is getting a website all there is to it? What are the ongoing effects of hosting, domain names, social media, keywords and crucial other factors in relation to your website? How can you check if your website is performing? Is it getting to the right people?

Learn what tools and approaches the professionals use for a successful website that out-performs the competition.

COST: \$400 includes hosting, domain name. (Max. 10)

WHEN: MON - TUE 12 - 20 NOV | 5.30PM - 8.30PM



HEALTH AND WELLBEING

Good SPACE Suicide Prevention Workshop

The Good SPACE workshop teaches participants how to identify that someone may be struggling or may be at risk of suicide, how to have a conversation with the person, and where to refer them for help.

The workshop also aims to improve the health and wellbeing of participants, and willingness to seek help when needed.

This 4-hour community workshop is provided by the Centre for Rural and Remote Mental Health to improve the mental wellbeing of rural and remote communities.

The workshop is open to anyone 18+.

Registration is essential before 9th November – positions are limited. Presented by Fiona Livingston from the Good SPACE program.

Lunch and refreshments will be provided.

COST: FREE

WHEN: FRI 16 NOV | 10.00AM - 2.00PM

HOBBIES / LEISURE

Cured Meat Workshop

Learn how to make Gourmet Ham, Salami, Capicola and Gourmet Sausages the Icelandic way with Siggí and Gustaf.

You will learn to smoke meat, the easy way, and by making it yourself you get the best meat - you cannot beat the flavour!

Ingredients and equipment for the workshop are supplied and you'll enjoy morning tea, a light lunch, and take home the goodies you make on the day as well!

COST: \$210* FREE for eligible drought-affected farmers and businesses.

WHEN: SAT 3 NOV | 10.00AM - 2.30PM

Soft Cheese Workshop

Learn how to make Feta, Persian Feta, Halloumi, Cream Cheese, Mascarpone and Greek Yoghurt - all in the one workshop!

There's a lot of value in this course - not only will you take part in a hands-on workshop where you'll learn how to make these delicacies, you'll also take home a step-by-step manual so you can continue with your cheesemaking at home!

If that's not enough, you'll enjoy morning tea, a light lunch, and take home the goodies you make on the day as well!

COST: \$210* FREE for eligible drought-affected farmers and businesses.

WHEN: SUN 4 NOV | 10.00AM - 2.30PM

Beer Brewing Workshop

This workshop will show you how easy it is to make beer at home using quality ingredients and modern brewing practices.

Learn how to make any style of beer from extract liquid malts and hops, an the importance of correct cleaning techniques when brewing beer.

You will participate in bottling a beer that has been brewed previously and take the bottles home to age and drink at a later date.

WHEN: FRI 19 OCT | 6.00PM - 8.00PM

COST: \$60* FREE for eligible drought-affected farmers and businesses.

HOBBIES / LEISURE

Drought Proof Veggies

Local farmer and entrepreneur Steve Bigg will be running a half day workshop on how to grow great veggies all year around, even in the most adverse conditions.

Steve is developing a perpetual intensive food production system called COMPONICS. Within this system there are several innovative new approaches to growing both plants and animals intensively in small areas.

WHEN: MON 29 OCT | 9.00AM - 2.00PM

COST: FREE* for eligible drought-affected farmers and businesses

Good For You Gardening

Learn the techniques and benefits of healthy gardening practices in these Monday sessions with Inverell Community Garden's Jane O'Brien.

Chemical Free Gardening & Green Smoothies

WHEN: MON 22 OCT | 10.00AM - 2.00PM

COST: \$30* FREE for eligible drought-affected farmers and businesses.

Moon Planting, Propagation & Veggie Salads

WHEN: MON 5 NOV | 10.00AM - 2.00PM

COST: \$30* FREE for eligible drought-affected farmers and businesses.

Composting & Sauerkraut

WHEN: MON 19 NOV | 10.00AM - 2.00PM

COST: \$30* FREE for eligible drought-affected farmers and businesses.

*In Term 4, Community College is offering a range of leisure classes ***FEE FREE** for eligible drought-affected farmers and businesses who live within its campus regions.*

Join others in the farming community and spend some time caring for your health, connecting, learning, or just enjoying something new.

Call your local campus to discuss your eligibility.



HOBBIES / LEISURE

Make Your Own Silver Ring

Learn the traditional technique of carving and shaping jewellers wax to create your own unique sterling silver ring.

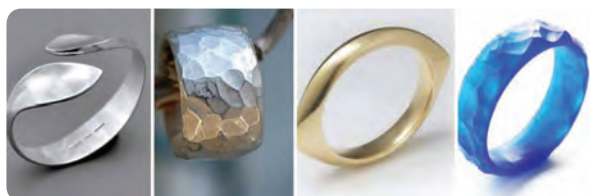
Once you are satisfied with your wax ring it will be cast into silver, cleaned and polished, ready to wear. You're welcome to bring your own design inspiration or use one supplied.

This one day workshop is designed for all levels, no experience necessary, just bring your enthusiasm.

All tools, materials, sterling silver for casting and polishing is included in the cost.

WHEN: SUN 18 NOV | 9.30AM - 3.30PM

COST: \$190* FREE for eligible drought-affected farmers and businesses.



Make Your Own Silver Pendant or Ring

Learn the traditional technique of carving and shaping jewellers wax to create your own unique sterling silver pendant or ring. Bring along some inspiration or design your piece from scratch.

Once you are satisfied with your wax piece it will be cast into silver, cleaned and polished, ready to wear.

This one day workshop is designed for all levels, no experience necessary, just bring your enthusiasm.

All tools, materials, sterling silver for casting and polishing is included in the cost.

WHEN: SUN 2 DEC | 9.30AM - 3.30PM

COST: \$190* FREE for eligible drought-affected farmers and businesses.

Summer Flowers Bag

Delve into your stash of pretty coloured fabrics to create this stylish bag.

A sewing machine and sewing experience required for this course, please bring your machine with you on the day.



WHEN: WED 7 NOV

9.30AM - 2.30PM

COST: \$30* FREE for eligible drought-affected farmers and businesses.

VOCATIONAL COURSES

Employment Skills for Women

This program is designed to assist women at all stages of their career - from starting out, re-entering or looking for a change.

The course will help map out your career and life aspirations and set realistic action plans to achieve this. It is designed to provide you with a toolkit to set your personal goals, develop skills to apply for your next job and other general life skills to give you confidence to succeed.

This course includes units of competency from FSK20113 Certificate II in Skills for Work and Vocational Pathways.

REGISTERED TRAINING ORGANISATION:

Community College Northern Inland Inc. (RTO 90027)

INVERELL

6 WEEKS: FRIDAYS 2 NOV - 7 DEC | 9.30AM - 3.00PM

ASHFORD

3 WEEKS: MON - TUE 26 NOV - 11 DEC | 9.30AM - 3.00PM

TINGHA

3 WEEKS: TUE & THU 6 - 22 NOV | 9.30AM - 3.00PM

COST: \$295 The Foundations Program is FREE for most people who need this help. It is paid for by the NSW Government. Contact your local Community College for more information.

Kickstart your career

This exciting new program will provide you with a map for setting your personal goals and developing the skills you need to get the job you want.

This foundation program is designed to help you break into the industry of your choice and navigate the road from wanting the job to getting the job. This course is a great launching pad into further training or acquiring nationally recognised tickets required for specific industries.

This course includes units of competency from the Foundation Skills Training Package.

REGISTERED TRAINING ORGANISATION:

Community College Northern Inland Inc. (RTO 90027)

10 WEEKS: WED - THU 17 OCT - 19 DEC | 9.30AM - 3.00PM

COST: \$975 The Foundations Program is FREE for most people who need this help. It is paid for by the NSW Government. Contact your local Community College for more information.

Vertical Planter

These planters created by Foundation Skills students are perfect for kitchen herbs or flowers.

Made from quality cypress and finished with external varnish, the kits are easily assembled and make a great addition to your home.

Planters are available to order for \$65. Contact Inverell Community College to place your order.



Moree Community College 45-47 Frome St, Moree

Monday - Friday 9.00AM - 3.00PM (may vary during school holidays)

Phone: 6751 1430 Mob: 0428 114 706 Email: moree@communitycollegeni.nsw.edu.au

COMPUTER COURSES

Personalised Computer Training

The College Computer Room, which runs on Windows 10 with Microsoft 2013, is available for Corporate Computer Training and Group Training and also bookings by individuals or small groups who wish to undertake specific tuition on programs or applications. You set the agenda, we provide the training, whether it's navigating Windows 10, using Publisher, Excel, Word and other programs or even using the Internet. You can arrange as many lessons as you need.

WHERE: Moree Community College Computer Room or your workplace.

COST: \$65 per hour aimed at groups of up to 4 people. (This includes a free initial meeting and appraisal of your needs to ensure we meet your specific requirements.)

iPad & iPhone Training

Have an iPhone or iPad but don't know how to use it? We can help! Bring your device and we'll help you to set it up according to your needs or show you how to use it. You can arrange one, or as many lessons as you need. Bookings are essential.

COST: \$50 per hour

HOBBIES / LEISURE

Macramè Workshop

Macramè is the French word for knots, this craft has been around for centuries, made a come back in the 70's and is back again!

A crash course in a few basic knots to make and take home a decorative modern wall hanging for your own.

COST: \$55* FREE for eligible drought-affected farmers and businesses.

WHEN: SAT 17 NOV
1.00PM - 3.00PM



HOBBIES / LEISURE

Welding for Beginners

This is a six week course, designed to gain basic knowledge and practical skills for welding with Manual Metal Arc (stick) and Gas Metal ARC (MIG) welding processes and ensure success in your home welding projects.

Wear cotton clothing and protective boots. Bring your own safety helmet and welding gloves.

COST: \$330* FREE for eligible drought-affected farmers and businesses.

WHEN: Tuesdays 30 OCT - 4 DEC | 6.00PM - 9.00PM
OR SAT - SUN 17 - 18 NOV | 8.00AM - 5.00PM

Welding Skills

This course is for those who have basic welding skills but would like to take them to the next level.

Tutor Peter Koschmann will be on hand to build your existing skills and offer expert opinion on any aspects of your welding technique.

All materials, morning tea and lunch provided.

COST: \$160* FREE for eligible drought-affected farmers and businesses.

WHEN: SAT 20 OCT | 8.00AM - 5.00PM

Photography Workshop

A hands on workshop designed to put you in control of your camera. Let me show you how to get the most out of your DSLR camera in a fun and friendly environment with lots of professional tips and tricks. Open to all levels of experience.

Bring: DSLR Camera, manual, any equipment you have, notebook and Lunch. Morning tea provided.

COST: \$85* FREE for eligible drought-affected farmers and businesses.

WHEN: SAT 27 OCT | 9.00AM - 3.00PM

*In Term 4, Community College is offering a range of leisure classes ***FEE FREE** for eligible drought-affected farmers and businesses who live within its campus regions.*

Join others in the farming community and spend some time caring for your health, connecting, learning, or just enjoying something new. Call your local campus to discuss your eligibility.

Narrabri Community College 3/100 Maitland St, Narrabri

Monday - Thursday 8.30AM - 3.30PM, Friday 8.30AM - 12.30PM (may vary during school holidays)

Phone: 6792 6196 Mob: 0407 222 914 Email: narrabri@communitycollegeni.nsw.edu.au

COMPUTER COURSES

Personalised Computer Training

The College Computer Room, which runs on Windows 10 with Microsoft 2013, is available for Corporate Computer Training and Group Training and also bookings by individuals or small groups who wish to undertake specific tuition on programs or applications. You set the agenda, we provide the training, whether it's navigating Windows 10, using Publisher, Excel, Word and other programs or even using the Internet. You can arrange as many lessons as you need.

WHERE: Narrabri Community College Computer Room or your workplace.

COST: \$65 per hour aimed at groups of up to 4 people. (This includes a free initial meeting and appraisal of your needs to ensure we meet your specific requirements.)

HOBBIES / LEISURE

Creative Christmas Theme Cake Art

Get your Christmas gifts sorted – make a Gingerbread House and get your Christmas cake decorated with assistance from Janice Smith – cake decorator extraordinaire.

For additional information contact Janice Smith 0429 921 741.

COST: \$20* FREE for eligible drought-affected farmers and businesses

WHEN: Wednesdays 4 - 28 NOV | 6.00PM - 9.00PM

Christmas Cupcakes and Cookies

Learn to decorate Christmas Cupcakes and Cookies to delight family and friends this Christmas.

For additional information contact Janice Smith 0429 921 741.

COST: \$20* FREE for eligible drought-affected farmers and businesses

WHEN: SAT 1 DEC | 10.00AM - 1.00PM



HEALTH AND WELLBEING

Getting Through the Dry



Getting Through The Dry is RAMHP's brand new training package with a focus on drought-related stress.

During this session the facilitator will provide information and insight into drought-related stress, strategies to manage stress and ways to take action. You will leave with a better understanding of how drought impacts on people and the community and where to find support. This is a free session and anyone can attend.

This course is conducted by Rural Adversity Mental Health Program (RAMHP).

COST: FREE. Bookings essential.

WHEN: MON 29 OCT | 10.00AM - 11.00AM



RAMHP Mental Health First Aid



Mental Health First Aid course teaches adults (18 years and over) how to provide initial support to other adults who are developing a mental illness or experiencing a mental health crisis.

Participants will learn about the signs and symptoms of common and disabling mental health problems, how to provide initial help, where and how to get professional help, what sort of help has been shown by research to be effective, and how to provide first aid in a crisis situation. This course is conducted by Rural Adversity Mental Health Program (RAMHP).

COST: \$50. Morning tea and lunch included.

WHEN: WED - THU 14 - 15 NOV | 9.00AM - 4.00PM

*In Term 4, Community College is offering a range of leisure classes ***FREE FREE** for eligible drought-affected farmers and businesses who live within its campus regions.*

Join others in the farming community and spend some time caring for your health, connecting, learning, or just enjoying something new. Call your local campus to discuss your eligibility.

HEALTH AND WELLBEING

Stay on Top of Your Money

This is a free interactive workshop on being the boss of your money with new skills on:

- Keeping everyday costs down
- Smart shopping
- Paying bills on time
- Creating new money habits

Presented by Leah Woods, Financial Counsellor from The Salvation Army.

COST: FREE

WHEN: WED 24 OCT | 10.00AM - 12.00PM

Anxiety, Stress and Gut Health

Gut health and mental health are reliant on each other, meaning that, anxiety can negatively affect your gut by throwing it out of balance and in turn gut problems can over time, worsen stress levels. Adding herbs, spices and antioxidants into your diet can help to promote positive changes in the gut. Healthy Gut! Healthy You!

COST: \$20* FREE for eligible drought-affected farmers and businesses

WHEN: SAT 20 OCT | 1.00PM - 3.00PM

Re-energise your Body for Health & Fitness

Healthy body – Healthy mind! Exercise makes you feel good because it releases chemicals like endorphins and serotonin that improve your mood. Exercise helps relieve stress, improves memory and helps you sleep better. (Wear comfortable clothing).

COST: \$20* FREE for eligible drought-affected farmers and businesses

WHEN: MON 22 OCT | 10.00AM - 11.00AM

Meditation for Relaxation

Meditation practice may be used with the aim of reducing stress, anxiety, depression and pain and increasing peace, perception and well-being. Come, relax and enjoy the experience! (Wear comfortable clothing).

COST: \$20* FREE for eligible drought-affected farmers and businesses

WHEN: SAT 27 OCT | 11.00AM - 12.00PM

HOBBIES / LEISURE

Camera Workshop

Learn how to get the best out of your DSLR camera. Learn to take better photos! This is a hands on workshop with time to practice your new skills and ask questions.

BYO: DSLR camera, manual and any equipment you may have.

Facilitator: Candice O'Neill (Photographer CJO Photography)

COST: \$85

WHEN: SAT 17 NOV | 9.00AM - 3.00PM

HOBBIES / LEISURE

Photo Fun

A fun hands on photographic workshop to help you to take better photos. Bring your camera or phone!

COST: \$20* FREE for eligible drought-affected farmers and businesses

ROWENA HALL: TUE 23 OCT | 9.30AM - 11.30AM

BURREN JUNCTION: TUE 23 OCT | 1.00PM - 3.00PM

Painting for Pleasure

This watercolour course is all about a playful and fun approach to watercolour painting. It is a perfect opportunity for those who want to get a concise overview on watercolour painting and how to work a painting from scratch to finish. Watercolour art materials will be provided.

COST: \$20* FREE for eligible drought-affected farmers and businesses

MAULES CREEK HALL: TUE 9 OCT | 10.00AM - 1.00PM

Macramé

Connect with other people in the community in a positive and supportive way as you learn the art of knotting string in patterns to make a decorative macramé wall hanging. Materials provided.

COST: \$20* FREE for eligible drought-affected farmers and businesses

WHEN: THU 8 NOV | 10.00AM - 12.00PM

Needle Felt Fun

Needle felting is simple, relaxing and inexpensive! In a fun and relaxed environment with Kaylene you can create just about anything you can imagine – perhaps your own hand made Christmas Tree decorations. Materials provided.

COST: \$20* FREE for eligible drought-affected farmers and businesses

WHEN: SAT 10 NOV | 10.00AM - 1.00PM

*In Term 4, Community College is offering a range of leisure classes ***FREE FREE** for eligible drought-affected farmers and businesses who live within its campus regions.*

Join others in the farming community and spend some time caring for your health, connecting, learning, or just enjoying something new. Call your local campus to discuss your eligibility.



Warialda Community College 36 Hope St, Warialda

Tuesdays 9.00AM - 5.00PM (Closed all other times, contactable by mobile)

Phone: 6729 1487 Mobile: 0429 934 346 Email: warialda@communitycollegeni.nsw.edu.au

COMPUTER COURSES

Touch Typing

A blended training course with four face-to-face sessions and home study to build your skills.

Using Typequick, a proven way to learn to touch type at your own pace, you will be guided through interactive lessons.

This course is aligned with FSKDIG03 Use digital technology for routine workplace tasks from FSK20113 Certificate II in Skills for Work and Vocational Pathways.

REGISTERED TRAINING ORGANISATION:

Community College Northern Inland Inc. (RTO 90027)

COST: \$95 **Fee free** training is available for eligible students. Contact your local Community College for more information.

WHEN: 4 x TUE 13 NOV - 4 DEC | 3.30PM - 5.30PM

HEALTH AND WELLBEING

Getting Through the Dry



Getting Through The Dry is RAMPH's brand new training package with a focus on drought-related stress.

During this 1 hour session the facilitator will provide information and insight into drought-related stress, strategies to manage stress and ways to take action.

You will leave with a better understanding of how drought impacts on people and the community and where to find support. This is a free session and anyone can attend.

This course is conducted by Rural Adversity Mental Health Program (RAMHP).

COST: FREE. Bookings essential.

WHEN: TUE 6 NOV | 11.00AM - 12PM



HOBBIES / LEISURE

Roo-Hide Whip Making 8-Strand

This is the next 2-day course in the John McMaster Whipmaking series. Students typically complete the basic 4-strand red-hide and 4-strand roo-hide whipmaking course so they can develop techniques of increasing complexity.

This is a very hands-on workshop where you'll be interacting with both the trainer and other participants in a 'community of learning' environment.

People who come to our leatherwork courses leave feeling part of the family.

Bring along your lunch which you can enjoy in the company of others. Tea, coffee and biscuits will be provided.

Prerequisites: Bring a very sharp knife to cut the leather.

COST: \$170 + \$150 approx materials cost to be paid in cash on the day.

WHEN: SAT - SUN 17 - 18 NOV | 8.30AM - 4.00PM

VENUE: Warialda High School Woodwork Room

Leatherwork:

A beginners guide to plaiting

You won't need any experience to take part in this one-day workshop where renowned local whipmaker John McMaster will teach you how to plait a round hatband, and lanyard.

Get ready for a day of fun in this hands-on workshop where you'll interact with your trainer and other participants in a "community of learning". All materials will be provided but you'll need to bring a small, very sharp knife to cut the leather!

Bring your lunch to enjoy in the schoolyard in the company of others. Tea, coffee and bikkies will be available all day

Prerequisites: Bring a very sharp knife to cut the leather.

COST: \$50* FREE for eligible drought-affected farmers and businesses

WHEN: SUN 4 NOV | 8.30AM - 4.00PM
OR SAT 15 DEC | 8.30AM - 4.00PM

*In Term 4, Community College is offering a range of leisure classes ***FEE FREE** for eligible drought-affected farmers and businesses who live within its campus regions.*

Join others in the farming community and spend some time caring for your health, connecting, learning, or just enjoying something new. Call your local campus to discuss your eligibility.

Considering a New Career in 2019?



Commencing in 2019

BUSINESS & IT

BSB30115 Certificate III in Business

ICT10115 Certificate I in Information, Digital Media and Technology

COMMUNITY SERVICES

CHC32015 Certificate III in Community Service

CHC33015 Certificate III in Individual Support (Ageing)

CHC33015 Certificate III in Individual Support (Disability)

ENGINEERING

MEM20105 Certificate II in Engineering

MEM30305 Certificate III in Engineering - Fabrication Trade

Courses only available in select locations. For more information contact your local college.



your new career
starts here

www.communitycollegeni.nsw.edu.au

REGISTERED TRAINING ORGANISATION 90027